



Pulse Microsystems
300-6711 Mississauga Rd.
Mississauga Ontario Canada L5N 2W3
www.pulsemicro.com
support@pulsemicro.com

Installing the Font Medley Pack

Thank you for purchasing the Font Medley Pack. The Font Medley Pack requires Tajima DG/ML by Pulse Edition X or Pulse Signature v10 or later. You should have received from your distributor the following files along with this document:

- A security device update file to activate your new fonts. This file starts with your security device number and ends with the extension .upd.
- The file FontMedley.exe. This file contains the font files that need to be installed on your embroidery software computer.
- The file PMLPCK.exe This is an updated font pack file that must be installed on your embroidery software computer.

If you have not received the files FontMedley.exe and Pmlpck.exe, these files can be downloaded from the link below.

<http://www.pulsemicro.com/fontmedley>

Follow the steps outlined below to install your new Font Medley pack fonts.

Step #1 Download the Required Files

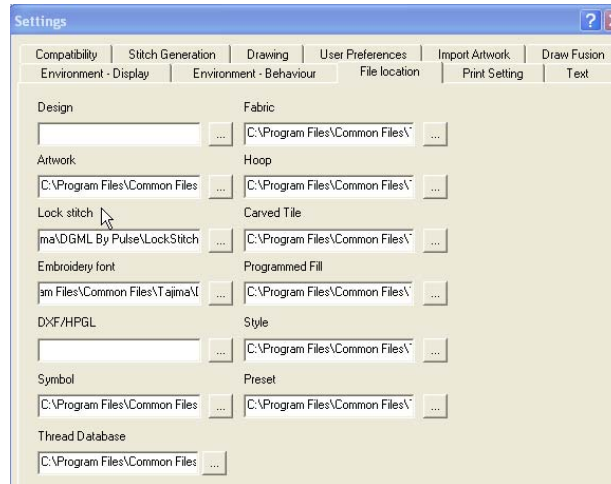
If you have not received the files, Pmlpck.exe and FontMedley.exe from your distributor, you can download the files from the link above. To download these files, click on each file and select the Save button. Save these files to your desktop. If your embroidery software computer is not located on the same computer as your internet connection, you can copy these files onto a CD. If you do not have an internet connection, please ask your distributor to send you a CD containing these files.

Please note that the size of the FontMedley.exe file is 10 Mb. Download times can vary depending upon your internet connection.

Step #2 Verifying the Location of Your Embroidery Font Files

In order to install the Font Medley font files, you need to know where your embroidery fonts are located. To find the location of your embroidery fonts, follow the procedure below:

1. Start your embroidery software.
2. Select Tools-Configuration-User Settings-File Location. You should then see the screen below:

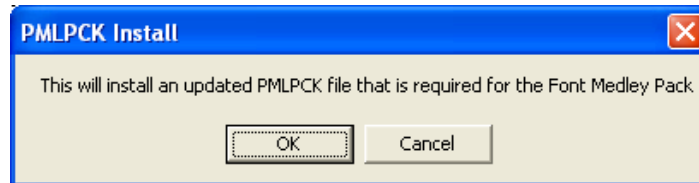


3. Record the path shown for the setting Embroidery Font. You will need this information when installing the font files. The default path for Tajima DG/ML by Pulse Edition Xi is C:\Program Files\Common Files\Tajima\DGML by Pulse\Fonts.
4. Click OK and exit your embroidery software to continue with the installation process.

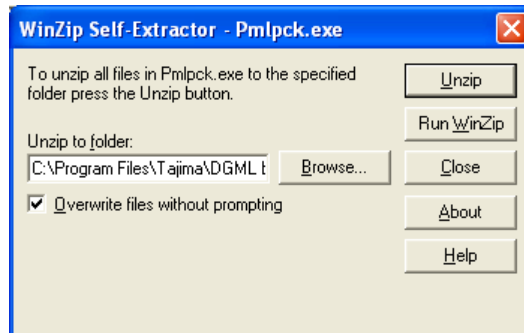
Step #3 Installing the Files

Once the required files have been downloaded and copied to your computer where the embroidery software is installed, you will need to install the files on your computer. Follow this procedure to install the Pmlpck.exe file.

1. Exit your embroidery software if it is running
2. Double click on the file Pmlpck.exe. You should then see the screen below:



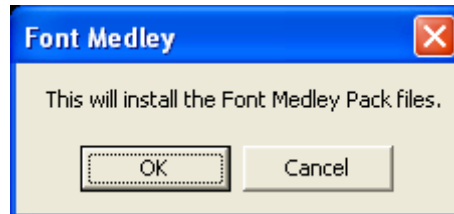
3. Click OK to continue with the installation. You should then see the screen below:



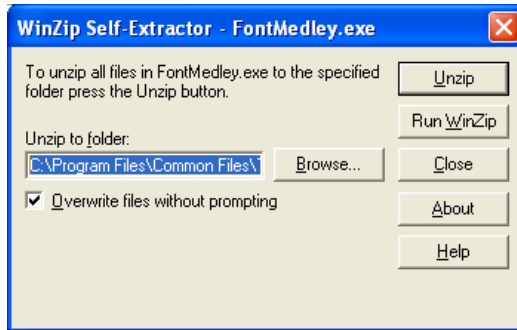
4. Click the Unzip button to copy the required file to the default folder for Tajima DG/ML by Pulse. Pulse Signature users should change the folder to C:\Program Files\Pulse\Signature.
5. After clicking the Unzip button, the message "1 file unzipped successfully" should be displayed. Click OK and then the Close buttons to complete the installation of the Pmlpck file.

Next, follow the procedure below to install the Font Medley Pack Files.

1. Double click on the file FontMedley.exe. You should then see the screen below:



2. Click OK to continue with the installation. You should then see the screen below:



3. Make sure the font path you recorded in step #2 is the same as the path listed in the Unzip to folder setting, if it is not, you can change the Unzip to folder path to match the one recorded in step #2. Click the Unzip button to continue.
4. After clicking the Unzip button, the message “60 files unzipped successfully” should be displayed. Click OK and then the Close buttons to complete the installation of the Font Medley Pack files.

Step #4 Updating your Security Device

Once the required files have been copied to your computer, you will need to update your security device to access the new fonts. You should have received a security device update file ending in .upd from your distributor, if you have purchased the Font Medley pack and have not received a security device update file, please contact your distributor for assistance. To update your security device, follow the procedure below:

1. Save the file ending with .UPD onto a floppy disk
2. Place the floppy disk into the disk drive of the computer that is used to run Tajima DG/ML by Pulse or Pulse Signature.
3. Start Tajima DG/ML by Pulse or Pulse Signature.
4. Select Tools.
5. Select Update Security Device.
6. Click Browse, you should see a list of files on the disk. Select the UPD file and click Open.
7. Click the Update button.
8. You will need to restart the software for the security device update to take effect.

Once your security device has been updated, you should be able to use your new Font Medley fonts.