



PULSE

**Tajima DG/ML by Pulse
Ambassador Edition X²
Version 12 Release Notes**

Tajima DG/ML by Pulse Ambassador Edition X²
Version 12 Release Notes

COPYRIGHT

© Copyright 2008 Pulse Microsystems Ltd. All rights reserved.

These Release Notes, and the Tajima DG/ML by Pulse Ambassador software, are copyrighted by the developer of the software, Pulse Microsystems Ltd. All rights reserved. US Patent Nos. 5 270 939; 5 343 401; 5 430 658; 5 506 784; 5 510 994; 5 541 847; 5 668 730; 5 771 173; 5 809 921; 6 196 146; 6 216 618; 6 390 005. European Patent Nos. 0545773. Other patents pending.

Information in this document is subject to change without notice.

The software described in this document is furnished under a license agreement and/or nondisclosure agreement. The software may be used or copied only in accordance with the terms of those agreements. No part of this publication and the software may be copied, photocopied, reproduced, translated, or reduced to any electronic medium or machine-readable form without the manufacturer's written permission.

Commercial or industrial use of trademark and copyrighted works (For example, books, paintings, drawings, photos, fanciful characters, and so forth) owned by other companies or persons, for creation of embroidery patterns without permission is illegal and may result in either criminal or civil liability.

Microsoft and Windows® 2000/XP/Vista are registered trademarks of Microsoft Corporation. All other product names are copyrighted and registered trademarks or trade-marks of their respective holders. All computer and software names identified by TM or tm are trademarks of their respective manufacturers.

Table of Contents

Introduction	4
Recommended Computer Specifications	4
1 User Interface changes	5
1.1 User Settings dialog change	5
1.2 Redesign of the workspace.....	6

Introduction

This document outlines the major differences between Ambassador versions 11 and 12. Please consult the Ambassador online help for information on using the software. The online help can be accessed from Ambassador by pressing the F1 key or selecting Contents from the Help menu.

Tajima DG/ML by Pulse Ambassador allows you to read and modify Pulse Outline files and many popular embroidery machine format files. Ambassador is a wonderful tool for digitizers. Digitizers can distribute Ambassador to their customers allowing them to make small changes to the design on their own. With Ambassador, you can:

- Read, resize, modify density and convert Pulse's industry leading Outline Format Files (PXF, POF, PED, KWK).
- Read and convert most popular embroidery machine format files including home embroidery machine formats.
- Colorize and save your designs allowing you to more accurately present your designs to your customers.
- Automatically clean small stitches from your designs increasing machine productivity.
- Print work sheets with design and sewing sequence information.

Recommended Computer Specifications

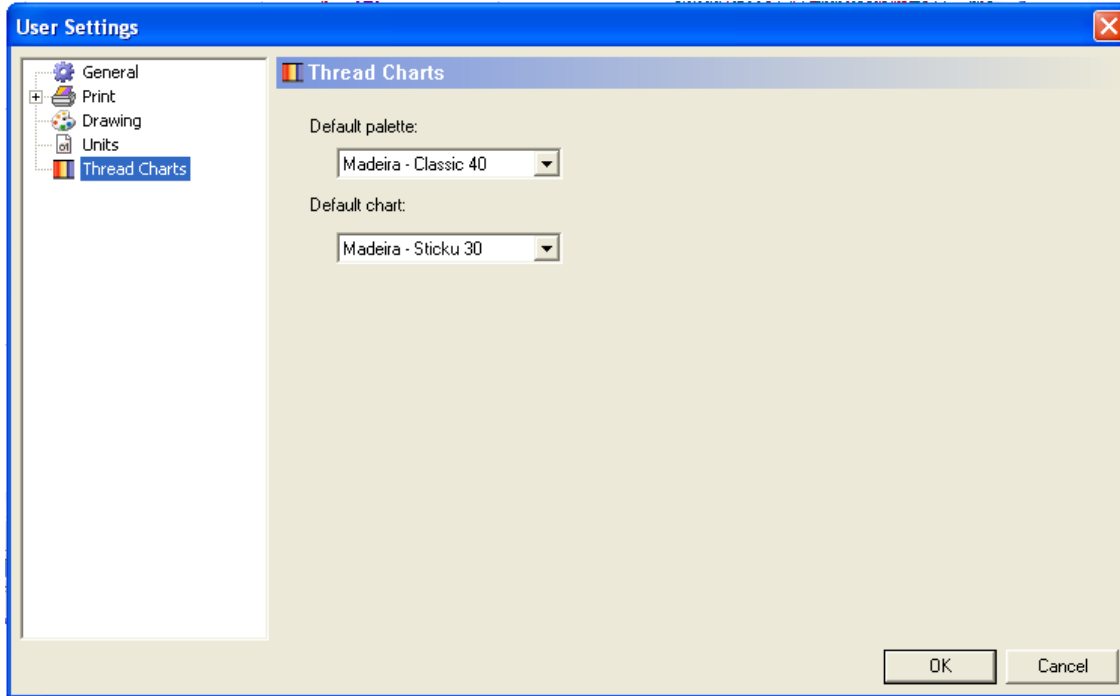
Below is a list of the recommended computer specifications for running Ambassador. Increasing RAM memory and/or processor speed will improve system performance.

- Genuine Intel Pentium 4, 2 GHz PC computer
- Microsoft Windows® 2000, XP, or Vista
- Monitor with 1024x768 video resolution with 16-bit color display (or higher)
- 1 gigabyte of RAM
- Minimum 1 gigabyte hard disk drive space available
- Mouse
- 17" or 21" monitor

1 User Interface changes

1.1 User Settings dialog change

The User Settings dialog has been simplified and improved for Tajima DG/ML by Pulse Ambassador Edition X² version 12. Instead of using a page with multiple tabs, as previously, there is now a single dialog box with an index to the various User Settings pages.



There are five top-level pages in the User Settings dialog: General, Print, Drawing, Units, and Thread Charts. Use these pages to set overall behavior properties of your Ambassador software interface; for example, the language of the display, the units of measurement used, and the default thread palette.

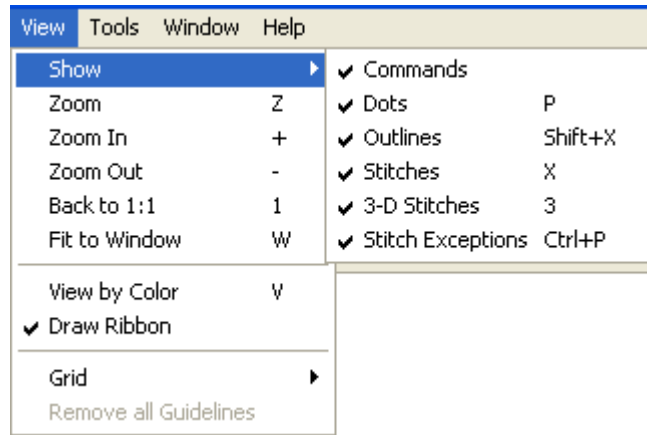
In addition, clicking the + sign next to the Print heading in the Index opens up three sub-pages: Images, Worksheets, and Fonts. These deal with preferences specific to how a design preview is printed; e.g., whether you want stitches or outlines shown, and what specific information you want printed along with the image.

1.2 Redesign of the workspace

Change Background Color: The button that opens the Color dialog for selecting the background color of the workspace has been moved from its previous position on the ribbon. It is now located to the right of the active thread chart, and is labeled 'Bkgd'.




View Menu: There has been a small change to the layout of the View menu, in the way that you select to show or hide various design attributes in the workspace. Commands, dots, outlines, stitches, 3D stitches and stitch exceptions have been organized together into a new submenu under View, called "Show".



You still can show/hide these attributes the same way as before from the buttons on the Ribbon.

Showing and hiding toolbars: The Toolbars menu has been removed from the menu bar. Showing/hiding toolbars is now done by selecting Tools—Configuration—Toolbars

New toolbar icons: A new Print Preview  button has been added to the File toolbar (equivalent to choosing File—Print Preview from the File menu). This button opens up a preview of the design worksheet for the current design.

On the Edit toolbar, the Undo  and Redo  buttons now have a different design (but function identically as before).